


# Windows 8 Windows 10

PROLIFIC PL-2303

## **DRIVER INSTALLATION INSTRUCTIONS**

# INTRODUCTION

If your PC runs Windows 7 or higher, your Safescan device should automatically be recognized (as **“Prolific USB-to-Serial Comm Port”**). This can be checked in the **Windows Device Manager**.

If your computer does not recognize your Safescan device, you will see a yellow exclamation mark  next to “USB-to-Serial Comm Port”. In this case you need to manually install the device driver. This instruction describes how to install the drivers for Windows 8, Windows 8.1 or Windows 10.

GO TO THE DRIVER INSTALLATION PROCEDURE

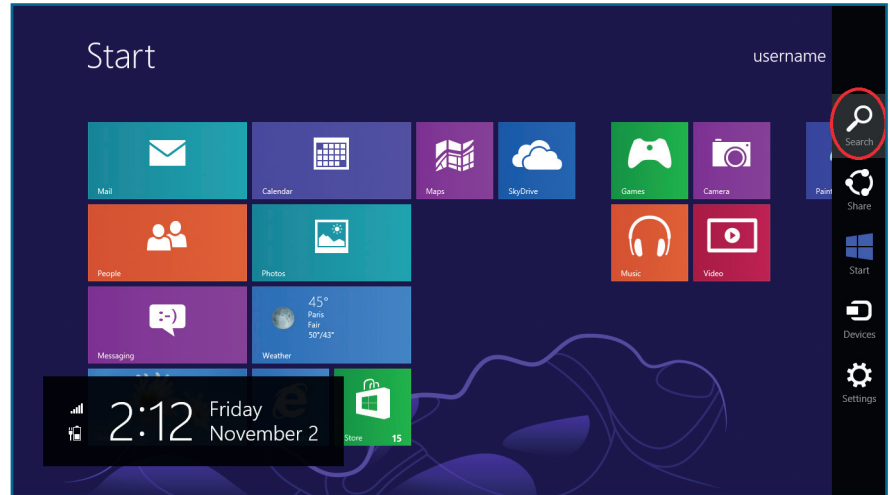


# DRIVER INSTALLATION

## 1. Check the driver in **Windows Device Manager**

This can be done as follows:

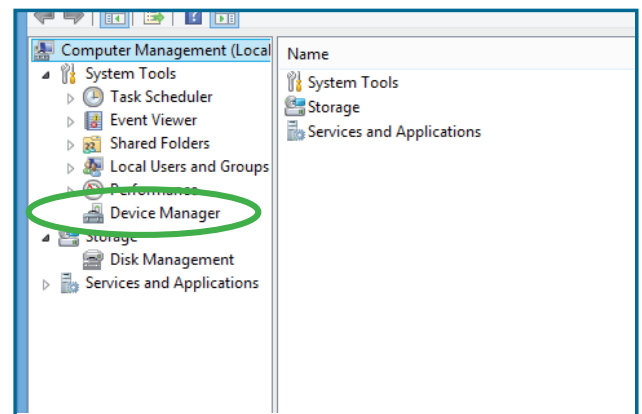
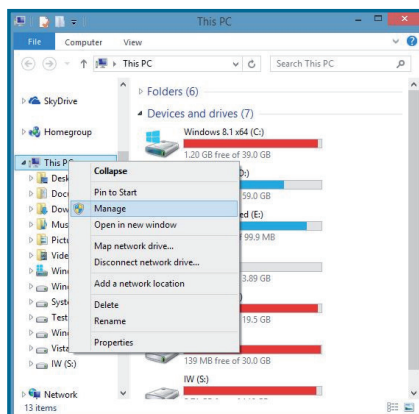
- 1.1 Point your mouse to the lower-right corner of the screen, move the mouse pointer up, and then click **“Search”**.




- 1.2 Enter **“Device Manager”** in the search box, and click on **Device Manager**. You might be asked for an admin password or to confirm your choice.

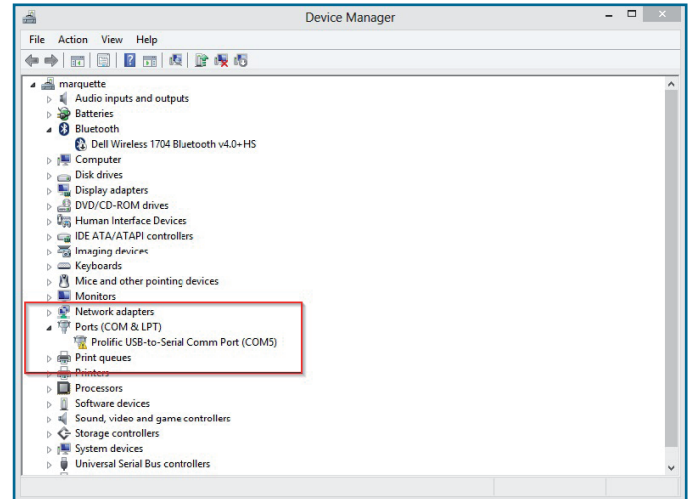


Alternatively, when you are in standard Windows Desktop mode: right click the **“This PC”** icon (may also be called **“My Computer”**) and select **“Manage”**. In the next screen, select **“Device Manager”**.








# DRIVER INSTALLATION

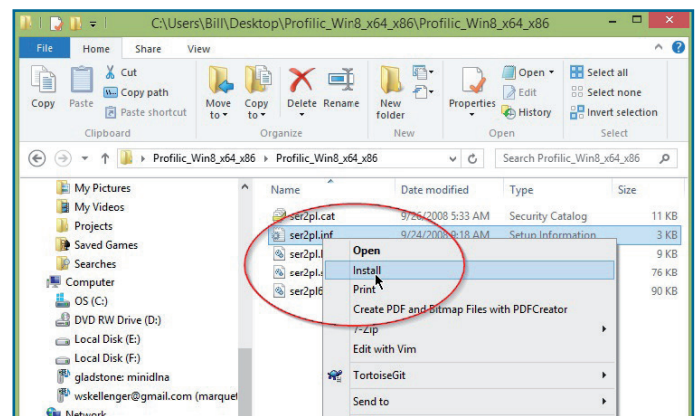
- 1.3 In Device Manager, double-click the **“Ports (COM & LPT)”** category to expand it. You will notice an exclamation mark  near **“Prolific USB-to-Serial Comm Port”**. This indicates that there is a device driver issue, the device is not properly recognized by Windows.



- 1.4 This update package includes the files listed below. Save these files to an easily accessible location such as your desktop.

Name	Date modified	Type	Size
 ser2pl.cat	9/26/2008 5:33 AM	Security Catalog	11 KB
 ser2pl.inf	9/24/2008 9:18 AM	Setup Information	3 KB
 ser2pl.PNF	11/26/2012 7:49 PM	Precompiled Setu...	9 KB
 ser2pl.sys	9/24/2008 9:01 AM	System file	76 KB
 ser2pl64.sys	9/24/2008 9:03 AM	System file	90 KB

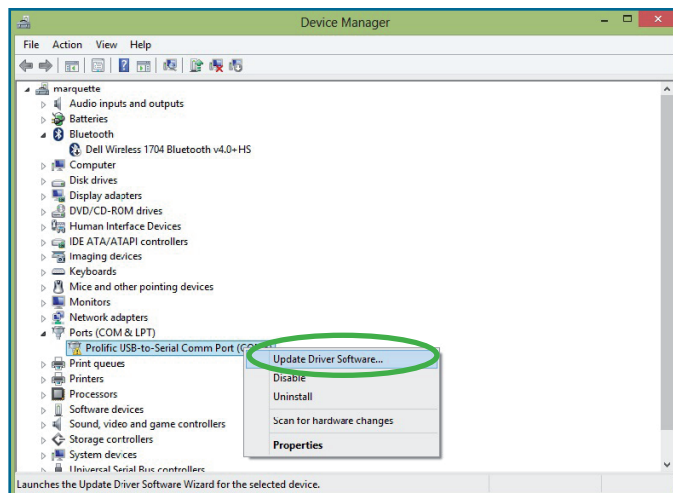
- 1.5 Right click the file **ser2pl.inf** and select **“Install”**.



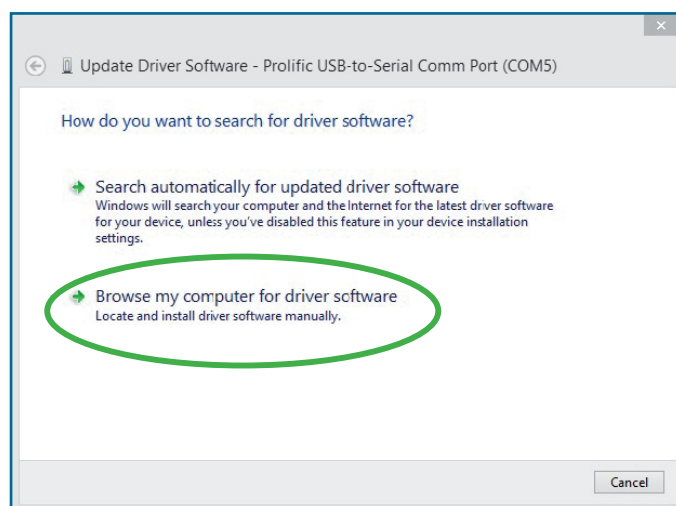
You probably won't notice that anything happened when you run it.

# DRIVER INSTALLATION

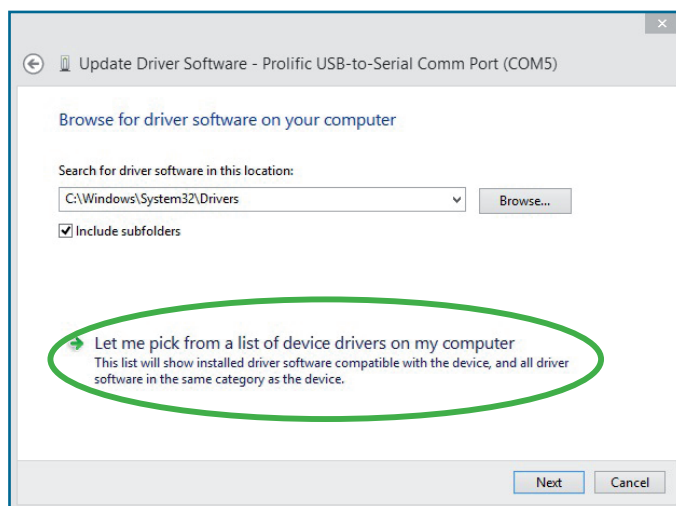
- 1.6 Go back to the **Device Manager**, double-click the **"Ports (COM & LPT)"** category to expand it. Right click the **"Prolific USB to Serial Comm Port"**, and click **"Update Driver Software"**.



- 1.7 In the resulting dialog, click **"Browse my computer for driver software"**.

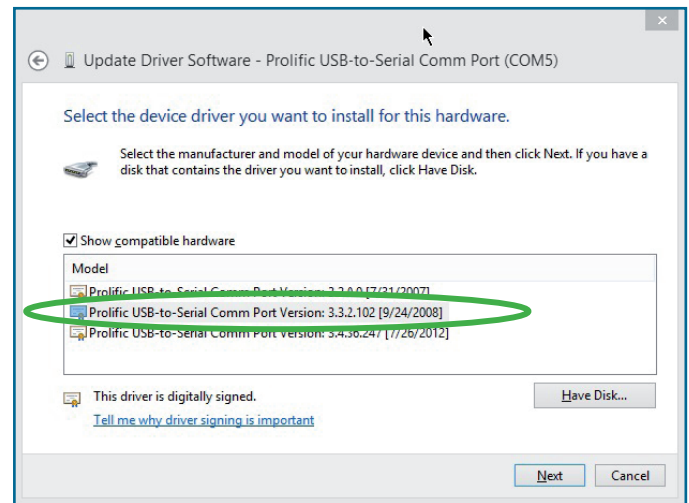


- 1.8 Select **"Let me pick from a list of device drivers on my computer"**.

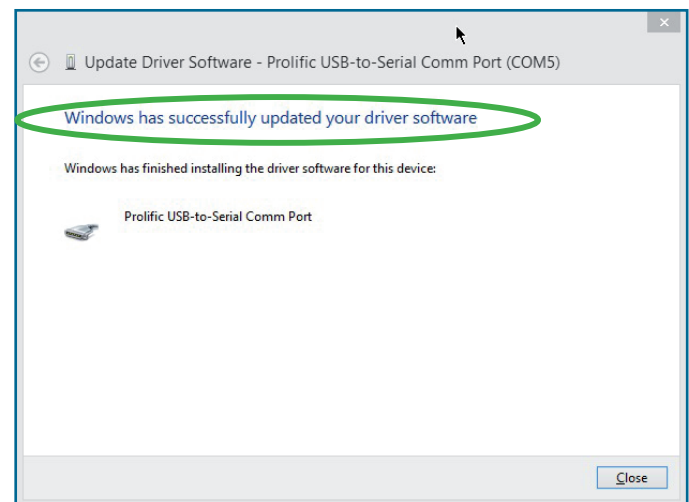


# DRIVER INSTALLATION

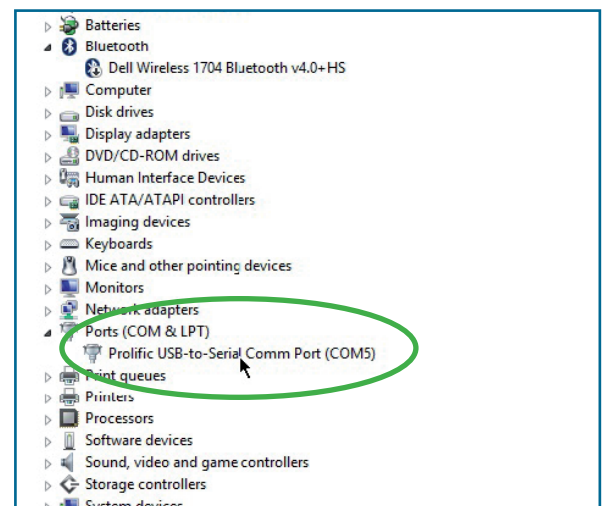
- 1.9 Double-click the **Prolific driver version 3.3.2** from 2008.



- 1.10 The following screen should appear, indicating the drivers are now correctly installed.



Next time you connect your Safescan device to your computer, it should now be recognized by your Windows operating system. When you check in Windows Device Manager, the yellow exclamation mark should now have disappeared.



**THE PROLIFIC DRIVER IS NOW UP-TO-DATE**